

# Northwest Washington Woodturners

Monthly Newsletter  
Vol 1 No 1

January  
2008



## Northwest Washington Woodturners....

meets every third Thursday of the month except April when the meeting is held the fourth Thursday. There is no meeting in December.

We meet at Hillcrest Park Lodge in Mt. Vernon WA. Exit I-5 at Kincaid street, exit 226. Turn east up Kincaid to So. 13th, turn right on 13th. Hillcrest Park is approx. six blocks south of 13th. The lodge is located in the Northwest corner of the parking lot beyond the tennis courts.

Meetings are open to anyone interested in wood turning. All skill levels from beginners to advanced turners are welcome.

### Club Contacts:

**Ron Grant**—President

360-658-2621  
narg@msn.com

**Mark Straight** – Vice President

360-653-4890  
m\_straight@comcast.net

**Shirley Butturs** –Secretary 360-826-

3984 dumpstadi@verizon.net

**Melanie Mankamy**—Treasurer

360-766-7004  
sjandmm@fidalgo.net

**Jerry Holmes** – Member at Large

**Dave Blair** – Member at Large

**Dennis Shinn**—Newsletter

360-854-9909  
woodnut@anatechsys.com



### Presidents Message

Hello All

We started the new year with a great demonstration and class by Bonny Kline and we'll have more throughout the year by other great artists and demonstrators. Gerrett and his committee is at work on the program for the year and that information will come out in an email as soon as they have it available. It will also be posted on the events calendar on our web site.

For the February meeting we'll have a mentoring session, which also will include a demonstration by Bob Doop called "limbs". We'll have several of our members demonstrating different ways to turn tops which goes along with our commitment to turn at the parks and rec functions of both Bellingham and Mt. Vernon. It's a lot of fun and it's a big hit with the kids.

One of the first events of the year is our participation in the Quil Ceda Woodcarvers show in Monroe at the fair grounds. This is a fun event and usually gets a couple new

members signed up. It's also a sales venue but we haven't done well in this department. There's lots to see and they also have a competition for carvers.

Jan Garlington is updating the web site so be sure to check out the new features as they become available. She'll have an update at the February 21<sup>st</sup> meeting and there will be a couple of major changes. Stay tuned.

Melanie reports there are 71 paid up members with about 40 still out there so we'd like to encourage everybody to get signed up as soon as possible.

Looking forward to seeing everybody at the meeting, and again thanks to Julian and all those who made the last couple years such a success.

**Ron**

### Contents

Club Contacts: _____	1
Club Business: _____	2
Meeting Notes _____	2
Meeting agenda _____	2
Bonnie Klein demo _____	4
January Gallery _____	5
Tip of the Month _____	10
Turner of the Month _____	11
Classified _____	12

# Club Business:

## Meeting Notes

January 17 2008:

Meeting of the Northwest Washington Woodturners

### Announcements

Our first meeting of 2008 was very well attended with several members making the trip from Canada and three new faces.

Newly elected president Ron Grant thanked Julian Lee for his work as president for the past two years and Garrit VanNess for the wonderful demonstrators he has arranged for the club. Thanks also to Melanie for her watchful eye on the treasury and the members at large for their work.

The new program committee will be Garrit VanNess, Bob Doop and Mark Straight.

### New Business

The board of directors will be reviewing the by-laws, anyone wishing to be part of the committee can e-mail Ron Grant or Mark Straight and let them know.

Our new vice-president asked that we all put away our chairs as we leave, as it has become the same 6-8 people cleaning up after every meeting.

The February meeting will be a mentoring meeting so e-mail Ron Grant with the things you would like help with. Ron, I would like to see some finishes and colorants, aniline dyes especially. Come on everyone, we all need to know something and this is the best place to find information.

There will be a 15-minute Q&A session for turners problems before each meeting—bring questions.

Check the calendar on the web site for notice of up coming events.

The mentors tab will soon be a members tab and when finished will require a password which will be given to members only.

Chic Murray reminded us of the large display area in the new Burlington Library which he has reserved for February. Wood art can be displayed and sold and the library gets a lot of visitors so contact Chic and help him fill the space.

[mcbmurray@aol.com](mailto:mcbmurray@aol.com)

### Menu for the next meeting

Chili, Corn Bread, Fiesta Corn, Green Salad, Cole Slaw and possibly something else.

*Don't forget to sign up for the cookie roster, you can do it online.*

**Deadline for submitting  
info to the Newsletter:**

**The first of the  
month after the last  
meeting**

*Contact Dennis Shinn with your  
submission:*

*360-854-9909*

*woodnut@anatechsys.com*

## **!Raffle Wood!**

Our wood raffle is an important source of income for the club. Please bring any surplus you can scrounge up but try to limit it to something you would enjoy turning yourself.

**Next  
Meeting  
21Feb08**

### Meeting agenda

#### **Mentoring Session!**

You know what this means, folks – the chance to get first hand, on hand help with turning problems and answers to questions that have come up since the last mentor session.

Take advantage of the expertise available – we have some very highly qualified turners within the ranks of our membership and every one of them is eager and willing to offer advice.

**Don't be shy!!**

## Shavings from the editor's floor

We're off and running into another year of exciting programs, meetings and demonstrations. I hope everyone is able to attend as many as possible.

As Shirley mentioned in the meeting notes and in the agenda box, the coming February meeting is a mentoring session. Please provide your input to the board members so they can plan accordingly.

The past year saw our membership grow to over 100! This means several things: First there's a good deal of interest in wood turning in the area, not to mention the draw we have from other parts of the Northwest. When we have people coming all the way from British Columbia to attend our meetings, we must be doing something right.

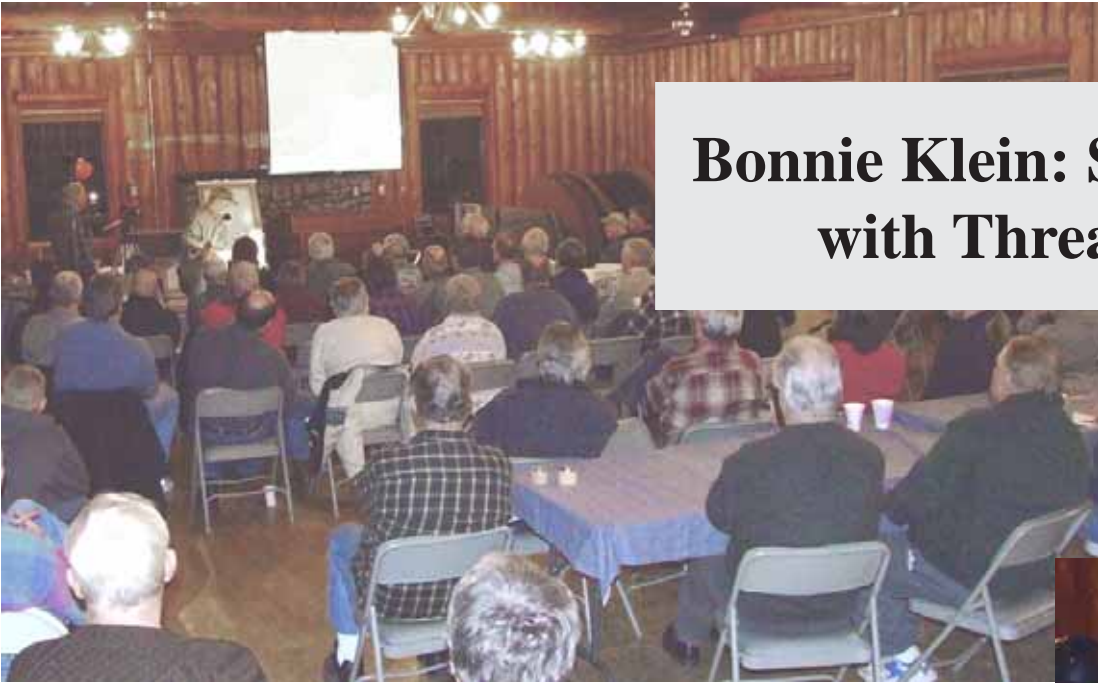
It means we have a large paid membership base to support our treasury, which in turn opens up many doors of opportunity with respect to attracting quality people to demonstrate and lecture at our meetings and to conduct classes.

With this increase in membership, we're really looking forward to even larger meeting galleries. Don't be shy about your work, folks. Yes, it can seem more than a little intimidating to display one of our humble pieces along side the work of the more advanced turners in the club but ...this is how we learn.

Obviously the gallery submission slips will be available at the meeting. I'll make every effort to have plenty available each meeting. Thanks to everyone for taking the time to fill them out as it makes associating the photographs with the authors of each piece a lot easier.

*Dennis Shinn*





## Bonnie Klein: Spin Top Box with Threaded Lid

**H**illcrest Lodge was filled almost to capacity for the January '08 meeting as Bonnie Klein showed how to produce one of her clever signature pieces: A small hollowed out box in the shape of a top with a threaded lid. Perhaps one of the more clever pieces we've seen. In addition to the step by step process of creating the threaded lid, Ms. Klein introduced the chatter tool to several of us who had not had the opportunity to see it in use.

Bonnie has designed and produces a clever thread cutting

fixture that utilizes a cross slide mounted on the lathe bed. A chuck adapter is mounted on the cross slide to adjust depth of cut while a lead screw on the fixture advances and rotates the work piece. The wedge shaped cutting tool is mounted in the lathe headstock and is rotated by the lathe motor. The cutting tool is otherwise stationary while the work piece is rotated and advanced into the cutting tool.

**B**onnie's demonstrations are always thorough with respect to all aspects of tool use associated with the project in question. This one was no exception. In particular the use of the chatter tool.

While most of the members indicated they had some familiarity with the tool, only a few appeared to have had much if any experience using it. Thus her explanation of how different



positions of the cutting or "chattering" portion of the tool create different patterns.

Using various colors of marking pens adds a great deal of depth and interest to the piece as well. Undoubtedly a chatter tool would be a welcome addition to anyone's equipment drawer.

You can get more information about the threading fixture at:

[www.bonnieklein.com](http://www.bonnieklein.com)

along with more information on the Klein mini lathe, books and several DVD's that cover a wide spectrum of wood turning.

Our thanks once again to Bonnie for an excellent demonstration.



# Member's Gallery

January: A monthly showcase of members' work



Mahogany  
Oil Finish  
7½ x 2½



Cherry/Smokewood  
Oil Finish  
8½x11½  
*Bill says these  
'branchwood' projects  
are fun pieces*

**Bill Cowan**

---



Walnut/Aluminum  
Lacquer & Wax  
4½x3  
Metal spinning  
sample



Maple/Aluminum  
Lacquer & Wax  
2 x 6



Boxelder/copper  
Lacquer & Wax  
*Copper inserts were  
hand spun*

**Colin Delory**

---



Madrone  
Wipe on Poly  
8½x2¾



Big Leaf Maple  
One Coat Shellac  
3¼x4¼  
*"My first round  
bottom attempt".*



Black Oak  
Wipe on Poly  
4x7  
*One year old salvage from  
Tennessee woodpile*



Locust  
Walnut Oil

**Bob Doop**

---

**Bob Elkins**

---

# Member's Gallery

January meeting: cont.



Maple Burl  
Approx 14" diameter

**Rick Erb**



Maple

**Jan Garlington**

---



Java Jug from kit, Hollow Vessel w/  
Contrasting Trim

**Ron Means**

---



Unknown Spalted  
Danish Oil  
8x5½



Walnut  
7x3  
No Finish



Pink Ivory/Cocobolo  
Apitong  
Tried & True Finish

**Bill Rawls**

---



Overgrown Live Fir Stump  
13x3½

Beeswax

I thought I had found the  
mother of all burls. Fir  
stump cut long ago  
refused to die

**Chick Murray**

---



Black Walnut  
12x2

# Member's Gallery

January meeting: cont.



Maple  
**Gene Skallerud**

---



Maple Burl, Unknown,  
Poppy Seed Parts  
Brass Filings Under  
Base



Maple  
Walnut Oil  
11x11



Spalted Maple  
Walnut Oil



Maple  
Shellac & Walnut Oil



Plum

**Jim Short**

---

# Member's Gallery

January meeting: cont.



Honey Locust  
Fumed w/Amonia  
Lacquer Finish



Spalted Madrone  
Walnut Oil



Ornament  
Plum, Holly &  
Cocobolo  
Lacquer Finish

## Vern Tator

---



Koa  
Danish Oil  
1½x¼  
\$1 gold coin inlay

## Ron Wehde

---



Three nested madrone burl bowls  
Walnut oil, BenMatte & Mineral Spirits  
*Note: the gallery slip for these pieces  
wasn't signed — If the artist would let me  
know at the next meeting we can include  
credit in the February newsletter.*



Oak

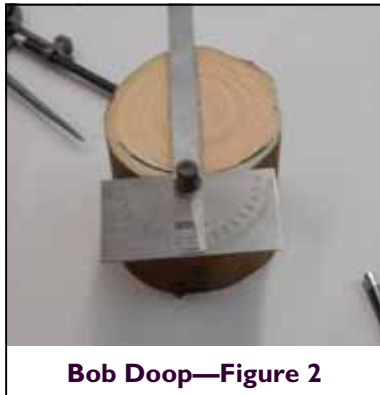


Madrone

## Mike Young



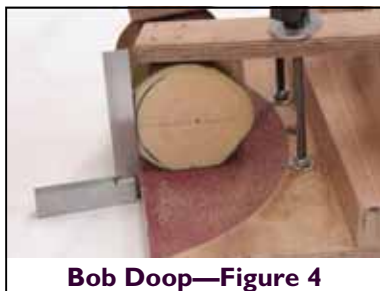
Bob Doop—Figure 1



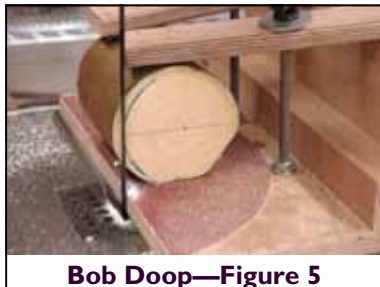
Bob Doop—Figure 2



Bob Doop—Figure 3



Bob Doop—Figure 4



Bob Doop—Figure 5

## Bob Doop Demonstrates at the Greater Vancouver Woodturner's Guild

The following article appeared in the Jan. issue of the Greater Vancouver Woodturner's Guild newsletter. We're proud to include a copy of the article which further indicates Bob's generosity in sharing his expertise.

### November's Main Event—Bob Doop on Turning Branches

Kerry Deane-Cloutier

Bob has taken classes from many of the great woodturners, and has picked up two important points from them: repetition really does work, and do not re-grind your gouges each time you take a course. Every woodturner grinds his or her gouges a different way, and that way works for what they do. It will not work for what you do!

Bob likes to turn small items from wet branches. He pointed out that there are many advantages to turning branches including that they are easy to saw and lift. They are also free, and thus perfect for learning new tools and techniques.

To prepare the blank, cut the branch about a 1/2" longer than the diameter of the branch. Put a compass point on the pith, and draw an arc across the bottom of each end (figure 1). On one end, use a square to draw a line from the pith to the arc, and draw another line perpendicular to that (figures 2 & 3). This line is your cut-off line. An ink pencil like the Sanford 705 will mark on wet wood. It is available from stationary stores and craft stores like Michaels. Mount the branch in a clamp like the Little Ripper so the cut-off line is vertical and the pith is parallel to the cut (figure 4). Make sure both ends of the branch are out an equal amount, and cut (figure 5). This creates a flat surface for gluing on a waste block. Before gluing up, use a T-square to transfer the line that comes from the pith to the cut surface (figure 6).

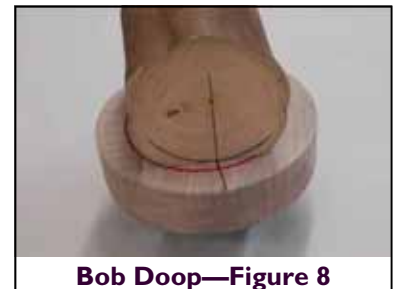
Mount your waste block onto a face plate and draw some rings on the face of the block to assist in centering the branch. Draw a



Bob Doop—Figure 6



Bob Doop—Figure 7



Bob Doop—Figure 8

line down the centre of the waste block (figure 7). Spend some time lining up the branch and the waste block and make sure it is centered. Use the centre lines and the rings to get it right (figure 8). Glue it with a medium CA glue, and only apply

(Continued on page 3)

the accelerator after it is centered. Clamp it with the tailstock and leave it 10 minutes.

Bob uses waste blocks a lot. He turns a lot of small pieces, and uses a lot of expensive burl, which he wants to use all of. He glues dry waste blocks onto his wet branches. If for some reason you have to stop turning in the middle of a project, remember to bag the piece. It will keep for up to a week without problems. If this is common for you, consider that aluminum face plates do not rust.

When turning, remember to push the tool down on the tool rest. After shaping the outside, use a parting tool to mark the bottom of the piece. This gives you a reference point for both the inside and the outside. Drill a center hole, then hollow.

After turning, Bob scrapes the outside of the piece with a very flexible cabinet scraper. Round the corners of the scraper to prevent catches. Bob then wet sands on the lathe, spraying with generous amounts of rubbing alcohol. Once sanded, he vacuum chucks the piece to finish the bottom. He takes it off to check the thickness of the bottom, and re-chucks it as necessary until it is thin enough. Finally, he dries the piece in a paper bag, changing the bag daily. He finds most pieces dry in about one week.

Thanks for showing us something different Bob – economical turning projects!

(An article on making a version of the band saw ripping sled Bob uses will be included in our next issue. Thanks to Bob for the great photos.)

### More on Metal Spinning:

Since Terry Tynan's metal spinning demonstration and classes last August there has been an increasing interest in the craft of metal spinning. There is a potential for forming an informal group of like minded people in order to provide more direct and immediate support in our efforts to learn more about spinning.

If you would like to participate in such a group, contact Dennis Shinn. It would be helpful if you could indicate how you feel such a group would be of benefit to yourself and others.

## Sedro-Woolley Museum Silent Auction

The Sedro-Woolley museum will be holding a silent auction and afternoon buffet luncheon on June 14th. If anyone would like to donate a piece of work for the auction please contact Dennis Shinn.

Items will be considered donations with all proceeds going to the museum. As you may know, the S-W museum is a non profit organization that is supported solely through donations from local business and individual memberships. Currently the museum houses over 10,000 items primarily relating to local history and culture.

### Tip of the Month:

“Turning air” is the popular term that applies to situations where the tool contacts the workpiece less than 100% of the time. As when turning thin narrow pieces as pictured below.

Jim Short sent us the setup he used to “keep this piece from spinning out of control”. What you see is the narrow workpiece mounted in the lathe chuck with a retaining ring made up of three layers cut from a sonotube. The three rings were cut & laminated using “lots of hot melt glue”.

Sonotubes are what are used to form & pour concrete columns. They're made from cardboard and come in a variety of diameters. They can be easily cut with a saber saw to the required width.

Thanks for the contribution, Jim. Many of us have been stymied by the technical approach to turning such advanced work — this tip will definitely prove useful in attempting one.



# Turner of the Month



**Lucinda VanValkenburg** has been making things since she was a young child.

As testimony to her many talents, she and her husband Steven are adding a two story addition to the house they built in 1980. Lucinda is also looking forward to building cabinets for her kitchen.

Most of us know Lucinda through her participation in the turning club. Her turning skills serve often as an inspiration to all of us. Aside from her obvious mastery of wood turning as well as other facets of woodworking in general, she's also an accomplished weaver and practitioner of other facets of the fabric arts.

Lucinda's involvement in weaving is primarily what got her interested in wood turning. When she decided to build her own loom, she needed some parts that were best made on the lathe.

After taking a class from Bonnie Klein Lucinda joined the NWWTA in 1998. A good deal of her work is production

turning, making spurtles, spatulas, tops, and scoops for local markets.

Lucinda's favorite wood is "free". Proving the point that you don't have to spend vast amounts of money on exotic turning blanks to produce quality pieces.

She owns a portable sawmill and has several sheds full of drying lumber.

Lucinda's creative talents regularly assist at Gerrit VanNess's Wonder Emporium. She recently collaborated on making a ceramic tile mural, for which she was gifted sessions with a physical therapist. If you are having trouble with forearm tendonitis, get Lucinda to show you the exercises that helped her.

Lucinda appreciates the demonstrations and education emphasis of our group and plans to continue her longstanding active support of N W W . We ' r e indeed fortunate to have such a gifted and sharing member of our group.

*Feature Editor Jim Short*



*Evidence of Linda's intense explorations in many directions of turning.*



*A well equipped shop keeps the creative juices flowing.*

## Classified

This space is set aside for members to advertise free of charge to sell or purchase Tools, wood, etc. Please submit your ad to Dennis Shinn ([hdshinn@eskimo.com](mailto:hdshinn@eskimo.com)) by the last Thursday of the month or submit it to me at the meeting for inclusion in the next months newsletter.

### MORE WOODTURNING

The newspaper for turners. Published 10 times a year by Fred Holder. One year: \$30.00; Two years: \$50.00; Three years \$70.00.

More Woodturning online at:  
[www.fholder.com/woodturning/woodturn.htm](http://www.fholder.com/woodturning/woodturn.htm)

Lots of great information for our browsing pleasure.

More Woodturning  
PO Box 2168  
Snohomish WA 98291-2168  
Phone: 360-668-0976  
email: [woodturner@fholder.com](mailto:woodturner@fholder.com)

### Club Discounts Available:

Show your Club Membership care and get 10% off at Rockler's and Crosscut Hardwoods.

### FOR SALE:

**BONNIE KLEIN MINIATURE LATHE**  
DC variable speed drive.



With Threading attachment.

Two additional chucks.

Collet set.

Two faceplates.

Collapsible Stand

Set of miniature tools and much more.

If you are interested in miniature turning, this is the lathe designed by one of the best miniature turners, Bonnie Klein.

Give this to your self or another interested in miniatures for Christmas.

\$600

**Mike Jackets, (360) 293-0530**

[bluejack@cablerocket.com](mailto:bluejack@cablerocket.com) for pictures.



*A good source of myrtle, maple burl and other figured turning burls*

Got a tool or two you no longer need? Need an item related to woodturning (or general shop use)?

Contact other members of the club here in the classified.

**Dunlap 9" x 32"** (bench top) lathe that I have for sale. It has a 1/2 hp motor, live and dead centers, three face plates, and a four jaw wood chuck. The 1725 RPM motor is coupled via (4) step pullies (V-belt) in the head and on the motor. It is also capable of out board turning, and the tail stock is adjustable for off center turning. This lathe is in perfect (like new) condition, and needs a new home now that I have ordered a bigger one that will cause this one be moved out of my small shop.

I am asking \$250 for the the package as described above. I would be willing to bring it to the next club meeting or it can be seen here at my home in Anacortes. Once discovered I'm sure it won't last long though. Also, I have a 1HP 3450 like new motor (110-220 v) that I would take \$50 for. It has a standard mounting base.

If a general E-mailing is in order that would be great.

**Dave Balyeat**  
**360-420-4942**

## Targo Woods

**1104 C Street Bldg. B**  
**Bellingham, WA**

Just three blocks south of the old site.

[www.targowoods.com](http://www.targowoods.com) [or]

[www.hardwoodstoget.com](http://www.hardwoodstoget.com)

Local Bellingham wood source for your projects. Hard woods, Burls, Veneers. Wood to replace a leg on a chair, make a whole dining room set or turn a bowl, you will find it at Targo.

Oby says: [NWWoodturner Club members will get 10% off on their purchases.](#)

**Save on gas buy local.**

## Useful Website Links

### Note:

Web links have been provided on our website rather than included in the newsletter. Please visit:

[www.northwestwashingtonwoodturners.org](http://www.northwestwashingtonwoodturners.org)

### Nichols Custom Bowl Lathe:

3hp Baldor variable speed motor  
Huge turning capacity

\$1500

### Contact Dick Jacobson -

[dij@wavecable.com](mailto:dij@wavecable.com)

360-299-0429

*Tell 'em you read about it in the Northwest Washington Woodturner's newsletter!*